



GISMO2



Geospatial Information to Support decision Making in Operations 2

The availability of geospatial information is a key resource for the planning and execution of military operations and training activities.

EDA Member States decided in 2013 to address within the context of PT ISR (Intelligence, Surveillance and Reconnaissance) the issue of availability of geospatial information for EU operations through a landscaping study (the **GISMO**) with the aim to:

- Identify Geospatial Information capabilities and resources required to support decision making in the framework of CSDP operations;
- Identify the solutions to improve existing capacities at EU OHQ and MS level;
- Maximise the exploitation of the identified geospatial services.

GISMO 2 intends to tackle identified gaps and propose customized solutions

What

Implement **applied solutions (a technological demonstrator)** to improve the access to geospatial information for CSDP, based on the GISMO study recommendations delivered in 2014. Areas to be addressed:

- Development of a **geospatial platform** with the aim to provide a centralised environment for information sharing and analysis (request, handle and share geospatial information);
- Facilitating the use of geospatial information towards a common operational framework;
- Identification of a minimum set of services (e.g. network analysis, mobility assessment, surface analysis, etc.) and products (e.g. maps, images, gazetteers, raster and vector products, etc.).

Why

To give support to the **decision making process** in the context of CSDP, with particular emphasis on OHQs and national command structures; standardization of products, standardization of services.

Who

GISMO2 is a common endeavour of **EDA and EU SatCen** in cooperation with **Member States, EUMS, IT EU OHQ, Multi-national Geospatial Support Group**.

Where (State Of Play)

Kick-off meeting (11 May 2015).

When

2015 -2016 (end March 2016).

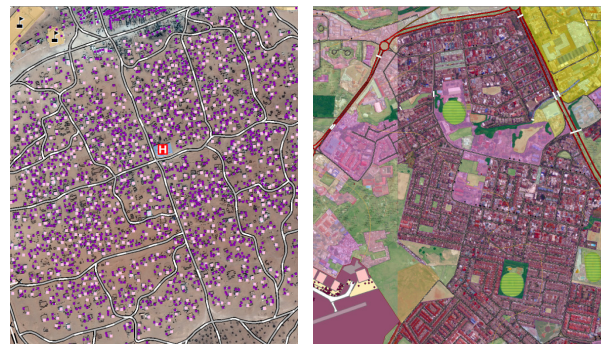
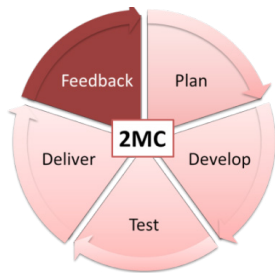
Member States

Member States benefit from this PROJECT at different levels. The capabilities developed will facilitate their operational participation in CSDP operations. Other geospatial HQ activities outside CSDP commitments will benefit from the outputs of GISMO2 as well by implementing the same technologies for management of geospatial information.



Implementation cycle

The project is implemented in close cooperation with the EU OHQ offered by Italy for testing and validation. During the life of the project a **2 month cycle** methodology will be applied, enabling the user to be involved during the development phase by providing feedback at several fixed stages.

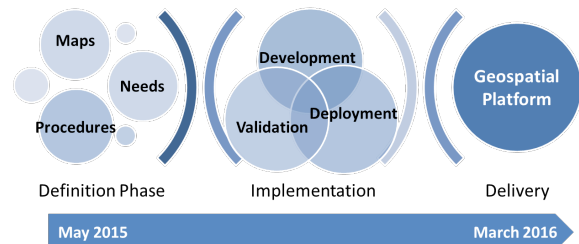


Project Milestones

Intermediate results will be provided to MSs for collection of feedback at (tentative dates):

- M3 » July 2015
- M5 » September 2015
- M7 » November 2015
- M9 » January 2016

Demonstration and training events will be organised in **March 2016**.



@ EDA

Last update: 30 July 2015